

# WELDPRO 360°

## LRW-18 MIG Welding Boom

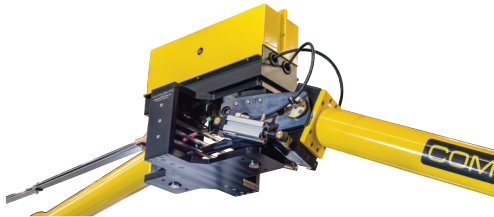


# WeldPro 360 LRW-18 MIG Welding Boom



**WeldPro 360 LRW-18 Mig Welding Booms** reduce or eliminate non-arc time welding-related tasks, shop floor clutter, and employee safety issues. This arm provides complete coverage anywhere within a 56' diameter semi-circular welding zone. The welding arm's main pivot assembly mounts to your existing building column, freestanding column or the optional mobile base and column assembly.

There are two boom arms, a primary and secondary. The primary arm is connected to the main pivot assembly and has a maximum of 192° of semi-circular rotation on a horizontal plane.



## Double-Articulated Joint Assembly

The primary and secondary arms are each connected to the double-articulated joint assembly. This joint is unique to the WeldPro 360 LRW-18 allowing the secondary arm to not only rotate 360° horizontally but also raise and lower up to 5'-6" vertically.

Both primary arm rotation and secondary arm raising and lowering are controlled with a wireless remote. The arm control requires 90 PSI of shop air and 120V electricity.

The wire feeder is mounted on the end of the secondary arm. We recommend wire feeders that are capable of controlling the power supply remotely. Boom

controls are placed within arm's reach of the operator increasing their productivity



and safety. This eliminates wasted time walking back and forth to the welder to change weld settings. Welding wire conduit liner, power cable, gas and air hoses are all contained within the tubular arms eliminating safety hazards and shop floor clutter. This makes for a neat, clean, organized shop.



## Standard Features

- 192° of bi-directional rotation
- Welding Reach - Up to 56' diameter semi-circle using a 15' MIG gun
- Secondary Arm raises and lowers 5'-6"
- Wireless Remote raises and lowers Secondary Arm and Unlocks and Locks Brake to Rotate Primary Boom Arm
- Double Articulated Boom - Eliminates dead zones
- Compatible with welders and wire feeders from all major brands
- UL-Listed Electrical Components
- Power Coated Finish

## Options

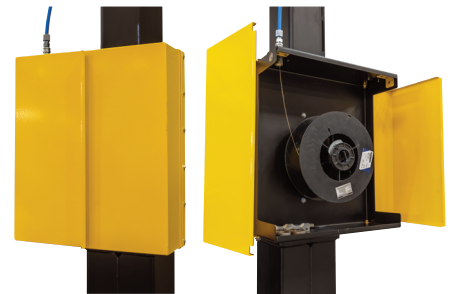
### Columns & Bases

- 8' Column w/ Mobile Base (shown below)
- 8' Column w/ Fixed Base
- 26" Column Extension



### Welding Accessories

- Wire Enclosure (shown below): for up to 60 lb spools
- Wire Drum Mount
- Welder Mount: only for fixed bases
- Gas Bottle Mount: only for fixed bases



### Hi-Vacuum Fume Extraction System

- Integrates with LRW boom arms
- Available in boom-mounted and mobile cart options
- Compatible with air- and water-cooled MIG guns



## Productivity Advantages

- Reduced time spent on non-welding tasks
- More time spent on welding
- Clean, organized welding cell
- Eliminates shop tripping hazards and floor clutter
- Increased operator safety, motivation, and productivity

Manufactured by  
**ANDERSEN**  
 INDUSTRIES

**WELDPRO 360°**

**kkk 'K YXDfc' \* '\$'Wca**

17079 Muskrat Ave. Adelanto, CA 92301 USA  
 Ph: (760)256-8766 Fax: (760)246-8702