

# WELDPRO 360°

## LRW-18P MIG Welding Boom



# WeldPro 360 LRW-18P MIG Welding Boom

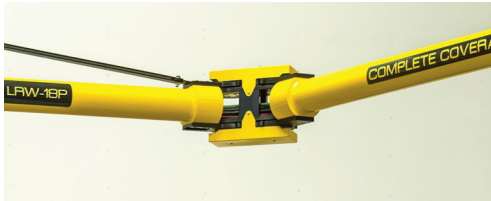


**WeldPro 360 LRW-18P MIG Welding Booms** reduce or eliminate non-arc time welding-related tasks, shop floor clutter, and employee safety issues. This arm provides complete coverage anywhere within a 56' diameter semi-circular welding zone. The welding arm's main pivot assembly mounts to your existing building column, freestanding column or the optional mobile base and column assembly.

There are two boom arms, a primary and secondary. The primary arm is connected to the main pivot assembly and has a maximum of 192° of semi-circular rotation on a horizontal plane.

## Double-Articulated Joint Assembly

The primary and secondary arms are each connected to a double-articulated joint assembly. This joint allows the



secondary arm to rotate 360° horizontally.

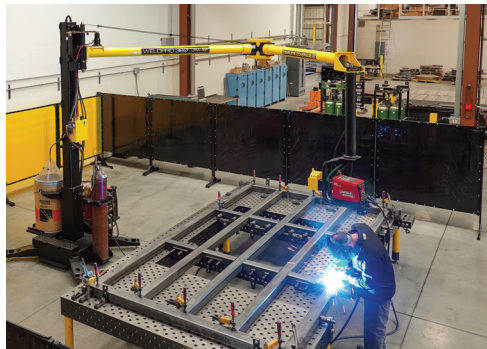
## WeldPro 360 LRW-18P vs 360 LRW-18

The 360 LRW-18P uses a simpler double-articulating joint assembly that connects the primary and secondary arms. This joint assembly on the 360 LRW-18P only rotates the secondary arm on a horizontal plane, it cannot raise or lower the secondary arm. This makes it a more cost-effective choice for those shops that don't need to raise or lower the secondary arm. Boom control requires 90 PSI of compressed air and a 20-amp 120V circuit for locking and unlocking for rotation of the primary arm.

The wire feeder is mounted on a pendant at the end of the secondary arm. We recommend wire feeders that are



capable of controlling the power supply remotely. Boom/Arm controls are placed within arm's reach of the operator increasing their productivity and safety.



This eliminates wasted time walking back and forth to the welder to change weld settings. Welding wire conduit liner, power cable, gas and air hoses are all contained within the tubular arms eliminating safety hazards and shop floor clutter. This makes for a neat, clean, organized shop.



## Standard Features

- 192° of bi-directional rotation
- Welding Reach - up to 56' diameter semi-circle using a 15' MIG gun
- Double Articulated Boom - Eliminates dead zones
- Compatible with welders and wire feeders from all major brands
- UL-Listed Electrical Components
- Powder Coated Finish

## Options

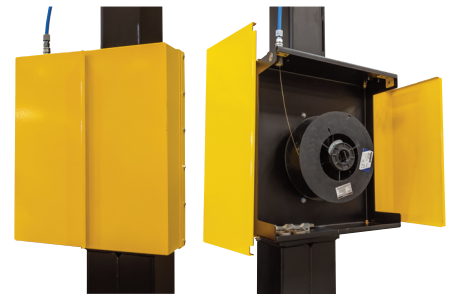
### Columns & Bases

- 8' Column w/ Mobile Base (shown below)
- 8' Column w/ Fixed Base
- 26" Column Extension



### Welding Accessories

- Wire Enclosure (shown below): for up to 60 lb spools
- Wire Drum Mount
- Welder Mount: only for fixed bases
- Gas Bottle Mount: only for fixed bases



### Hi-Vacuum Fume Extraction System

- Integrates with LRW boom arms
- Available in boom-mounted and mobile cart options
- Compatible with air- and water-cooled MIG guns



## Productivity Advantages

- Reduced time spent on non-welding tasks
- More time spent on welding
- Clean, organized welding cell
- Eliminates shop tripping hazards and floor clutter
- Increased operator safety, motivation, and productivity

Manufactured by  
**ANDERSEN**  
INDUSTRIES

**WELDPRO 360°**

[www.WeldPro360.com](http://www.WeldPro360.com)

17079 Muskrat Ave. Adelanto, CA 92301 USA  
Ph: (760)256-8766 Fax: (760)246-8702